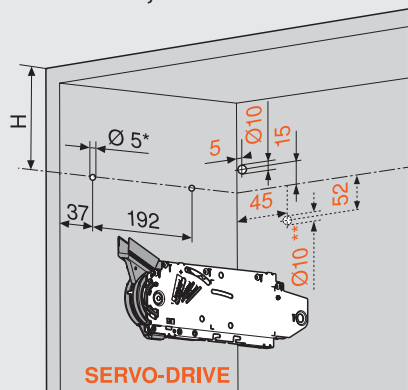


Planiranje – simetrično

Položaj bušenja

- \* Dubina bušenja 5 mm
- \*\* Alternativno bušenje

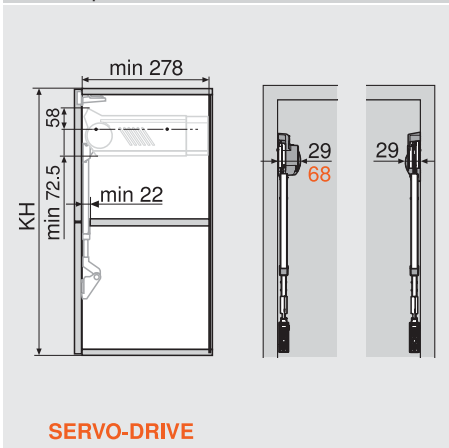


SERVO-DRIVE

4 x vijci za šperploču Ø 4 x 35 mm  
Rupa za SERVO-DRIVE kabl razdjelnika samo s lijeve strane

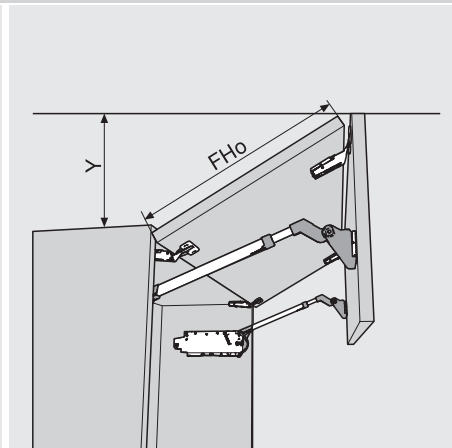
Visina korpusa KH	H
480 - 549 mm	KH x 0.3 - 28 mm
550 - 1040 mm	KH x 0.3 - 57 mm

Potreban prostor



SERVO-DRIVE

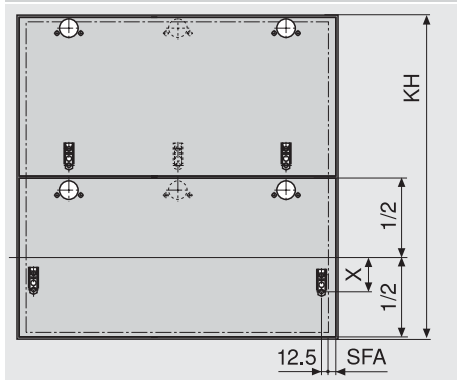
KH Visina korpusa



FHo Visina fronta gore

Graničnik kuta otvaranja	- Y
Bez	FHo x 0.44 + 38 mm
104°	FHo x 0.24 + 34 mm
83°	0 mm

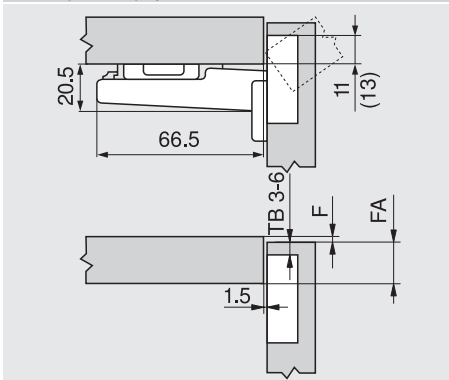
Obrada fronta



SFA Bočno otvaranje fronte

Visina korpusa KH	X	
480 - 549 mm	70 mm	68 mm
550 - 1040 mm	47 mm	45 mm

CLIP top 120°-spojnica

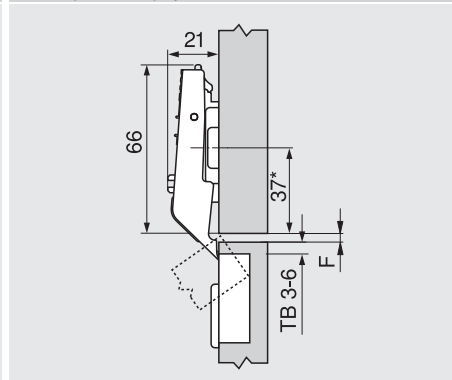


F Fuga  
( ) CLIP top 120°-posebna spojnica

Udaljenost čašice TB	Otvaranje fronte FA													
	5	6	7	8	9	10	11	12	13	14	15	16	17	
0											3	4	5	6
3							3	4	5	6				
6				3	4	5	6							
9	3	4	5	6										

Podložak

CLIP top-međuspojnica

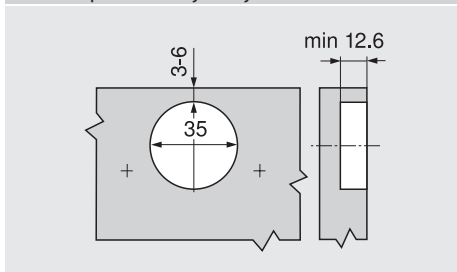


F Minimalni razmak = 1.5 mm  
\* 37 mm kod križnih montaž podloška (37/32)

Udaljenost čašice TB	Središnja fuga F									
							3	4	5	6
0							6	5	4	3
3										
6										
9										

Podložak

Montaža pričvršćivanjem vijcima



INSERTA-/EXPANDO-čašica

