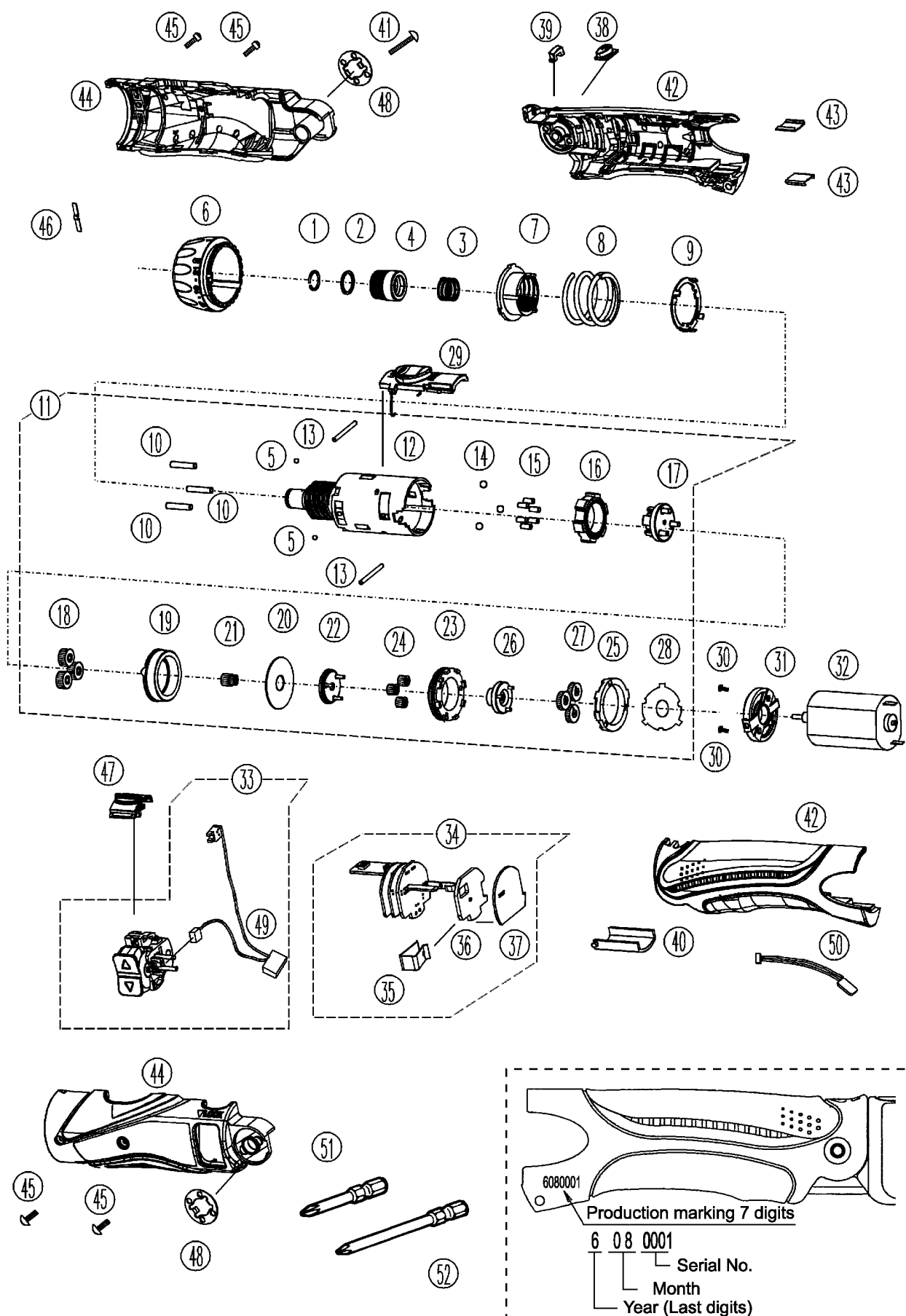


### 3 EXPLODED VIEW



## 4 REPLACEMENT PARTS LIST

### NOTE:

\*B=only available as set

\*C=available individually

Ref. No.	Parts No.	Parts Name & Descriptions	Remarks			Per Unit
1	WEY7410K1167	C-TYPE SPRING				1
2	WEY7410L0867	THRUST PLATE				1
3	WEY7410L0927	SPRING FOR BIT				1
4	WEY7410K3717	BIT HOLDER				1
5	WEY503B1927	STEEL BALL	*B	(2PCS/PK)		2
6	WEY7410K3227	CLUTCH HANDLE				1
7	WEY6225L0637	ADJUSTING SCREW				1
8	WEY6225L0167	CLUTCH SPRING				1
9	WEY6225L0847	CLUTCH PLATE				1
10	WEY6225L0397	PIN A	*B	(3PCS/PK) $\phi$ 3*15.1		3
11	WEY7410L1087	GEAR BOX BLOCK				1
12	WEY7410L1807	GEAR CASE				1
13	WEY6225L0377	PIN C	*B	(2PCS/PK) $\phi$ 2*22.8		2
14	WEY6225L6977	STEEL BALL	*B	(3PCS/PK) $\phi$ 3.5		3
15	WEY6225L0387	PIN B	*B	(6PCS/PK) $\phi$ 2.5*5.8		6
16	WEY7410L1507	LOCK RING				1
17	WEY6225L1147	CARRIER D				1
18	WEY6225L1347	PLANET GEAR C	*B	(3PCS/PK)		3
19	WEY6225L1477	RING GEAR C				1
20	WEY6225L0857	THRUST PLATE				1
21	WEY6225L1117	CARRIER A				1
22	WEY6225L1127	CARRIER B				1
23	WEY6225L1487	RING GEAR A				1
24	WEY6225L1367	PLANET GEAR B	*B	(3PCS/PK)		3
25	WEY6225L1497	RING GEAR B				1
26	WEY6225L1137	CARRIER C				1
27	WEY6225L1357	PLANET GEAR A	*B	(3PCS/PK)		3
28	WEY502B0207	INTERNAL PRESSURE				1
29	WEY7410H3237	CHANGE-GEAR HANDLE				1
30	WEY6225L6027	SCREW	*C	K3-5		2
31	WEY6225L0027	MOTOR MOUNTING BASE				1
32	WEY7410L1008	DC MOTOR				1
33	WEY7410K2007	SWITCH				1
34	WEY7410L2117	CONTROL PCB				1
35	WEY6225L0197	SPRING				1
36	WEY7410L2567	RADIATING PLATE				1
37	WEY7410L0207	TERMINAL BASE PLATE				1
38	WEY7410H3567	LED LIGHT ON/OFF BUTTON				1
39	WEY7410X3117	BATTERY LOW WARNING LAMP COVER				1
40	WEY7410H0877	HINGE COVER				1
41	WEY502B6217	TAPPING SCREW		M4-20		1
42	WEY7410K3937	GRIP AB SET				1
43	WEY6225L0157	FASTENING CLIP	*B	(2PCS/PK)		2
44	WEY7410K3059	HOUSING AB SET		for EUROPE		1
44	WEY7410K3050	HOUSING AB SET		for OCEANIA		1
45	WEY6230L6017	TAPPING SCREW	*C	2.6*8		4
46	WEY6225L0177	CLICK SPRING				1
47	WEY7410H0397	LOCK LEVER				1
48	WEY502B0187	CLICK SPRING	*B	(2PCS/PK)		2
49	WEY7410L2127	DETECTION PCB				1
50	WEY7410L2337	LED MODULE				1
51	WEY6225S7888	#1 PHILIPS BIT		L=50mm		1
52	WEY6225S7958	#2 PHILIPS BIT		L=50mm		1
-	WEY7410K7018	TOOL CASE		for LA2S		1
-	WEY7410K8008	INDIVIDUAL BOX		for LA1C		1
-	WEY7410K8109	OPERATING INSTRUCTIONS				1

\*\*Battery Pack is available as an optional accessory. See the nearest sales dealer for details.

\*\*\*For replacement parts of charger, see the charger service manual.

Charger complete set is available as an optional accessory. See the nearest sales dealer for details.