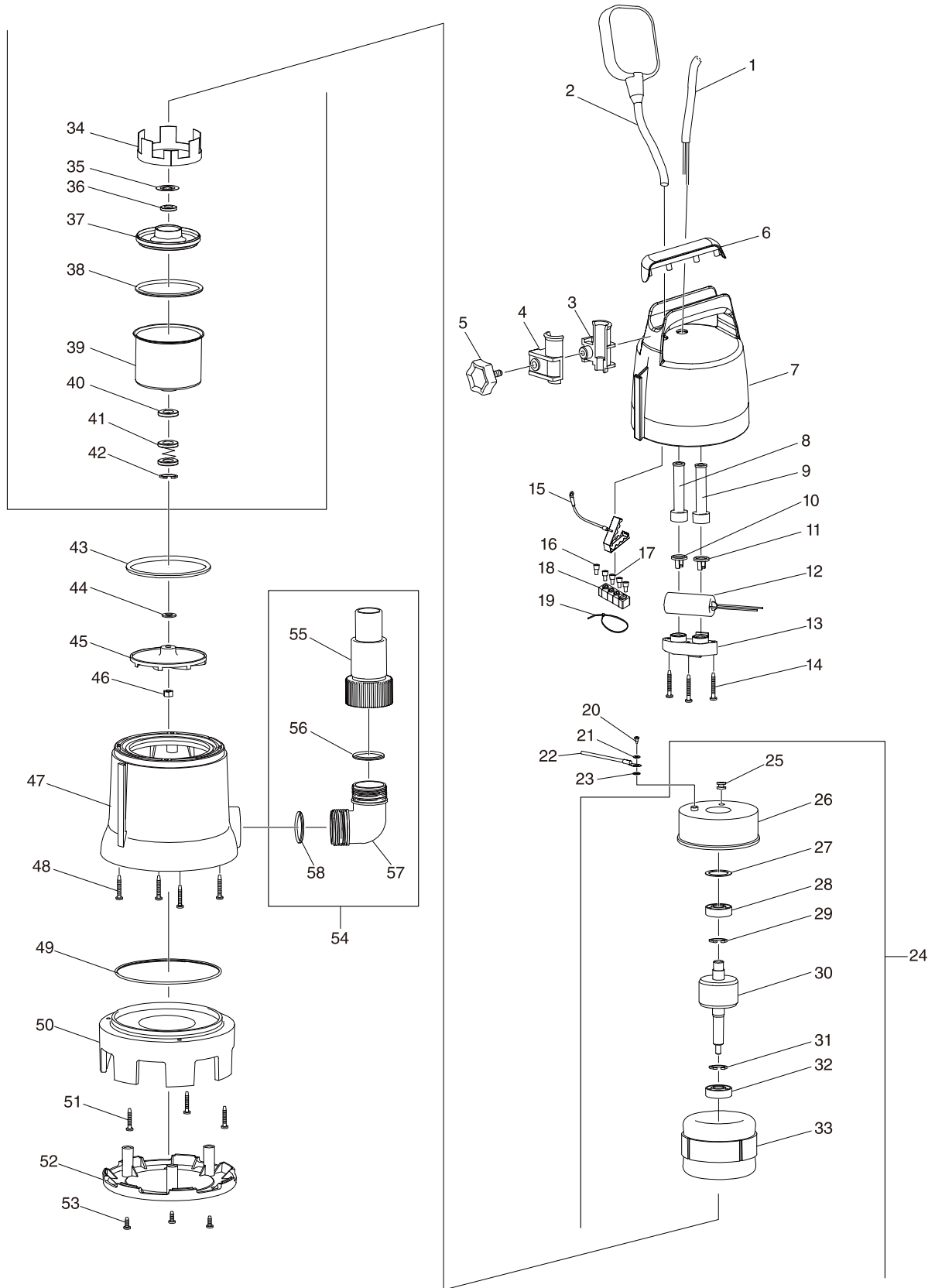


# Modell-Nr. PF1010 SUBMERSIBLE PUMP



# Modell-Nr. PF1010 SUBMERSIBLE PUMP

Position	Artikel-Nr.	Beschreibung	I/C	Stk.	N/O	Opt. 1	Opt. 2	Hinweis
001	609025435	POWER SUPPLY CORD W.PLUG		1				
002	609026209	FLOAT SWITCH BLUE		1				
003	609026210	CORD CLAMP BODY SIDE		1				
004	609026211	CORD CLAMP THUMB SCREW SIDE		1				
005	609026212	THUMB SCREW M5X16		1				
006	609024586	HANDLE COVER MAKITA		1				
007	609026219	UPPER HOUSING BLUE		1				
008	609024588	CORD GUARD 8.5		1				
009	609024588	CORD GUARD 8.5		1				
010	609024590	CORD CLAMP 8.5		1				
011	609024590	CORD CLAMP 8.5		1				
012	JH00000045	CAPACITOR 16 MICRO F		1				
013	609024592	CAPACITOR HOLDER		1				
014	609024593	TAPPING SCREW 4X32		3				
015	609024628	GROUND COVER FOR RUBBER COVE		1				
016	609024629	CLOSED END SPLICE 5.5-SD		2				
017	609024630	CLOSED END SPLICE 2-SD		3				
018	609024631	RUBBER COVER FOR 4 SPLICE		1				
019	609024632	CABLE TIE		1				
020	609024601	SCREW M4X8		1				
021	609024596	SPRING WASHER 4		1				
022	JH00000004	GROUND WIRE ASSY		1				
023	609024600	TOOTHED LOCK SPRING WASHER 4		1				
024	JH00000067	MOTOR ASSY 230V 50HZ		1				
D10		INC. 25-42						
025	609024595	GROMMET 10		1				
026	609024594	MOTOR HOUSING UPPER SIDE		1				
027	609024602	WAVE WASHER 25		1				
028	609024603	BALL BEARING 6201Z		1				
029	961052-5	RETAINING RING S-12		1				
030	JH00000053	ROTOR		1				
031	961052-5	RETAINING RING S-12		1				
032	609024603	BALL BEARING 6201Z		1				
033	JH00000054	STATOR ASSY 230V 50HZ		1				
034	609024679	LINING RING		1				
035	609024607	SHIM		1				
036	609024608	SKELETON SEAL RING		1				
037	609024609	BEARING BOX		1				
038	609024610	O-RING		1				
039	JH00000055	MOTOR HOUSING LOWER SIDE		1				
040	609024608	SKELETON SEAL RING		1				
041	609024633	MECHANICAL SEAL		1				
042	609024634	RETAINING RING S-12 INOX		1				
043	609024612	O-RING		1				
044	609024613	SPACER WASHER 12		1				
045	JH00000056	IMPELLER		1				
046	609024615	NYLON INSERT HEX LOCK NUT M8		1				
047	609024682	MAIN PUMP SHELL		1				

Modell-Nr. PF1010 SUBMERSIBLE PUMP

Position	Artikel-Nr.	Beschreibung	I/C	Stk.	N/O	Opt. 1	Opt. 2	Hinweis
C10	216013-3	STEEL BALL 6		1				
048	609024620	Y-HEAD TAPPING SCREW 4X28 INOX		4				
049	609024621	O-RING		1				
050	609024658	BASE		1				
051	609024659	SELF-TAPPING SCREW		3				
052	609024660	BOTTOM PLATE		1				
053	609026213	TAPPING SCREW 4.2X13 INOX		3				
054	JH00000005	OUTLET CONNECTOR KIT		1				
D10		INC. 55-58						
055	609024627	OUTLET CONNECTOR		1				
056	609024625	O-RING		1				
057	609024626	ELBOW		1				
058	609024625	O-RING		1				