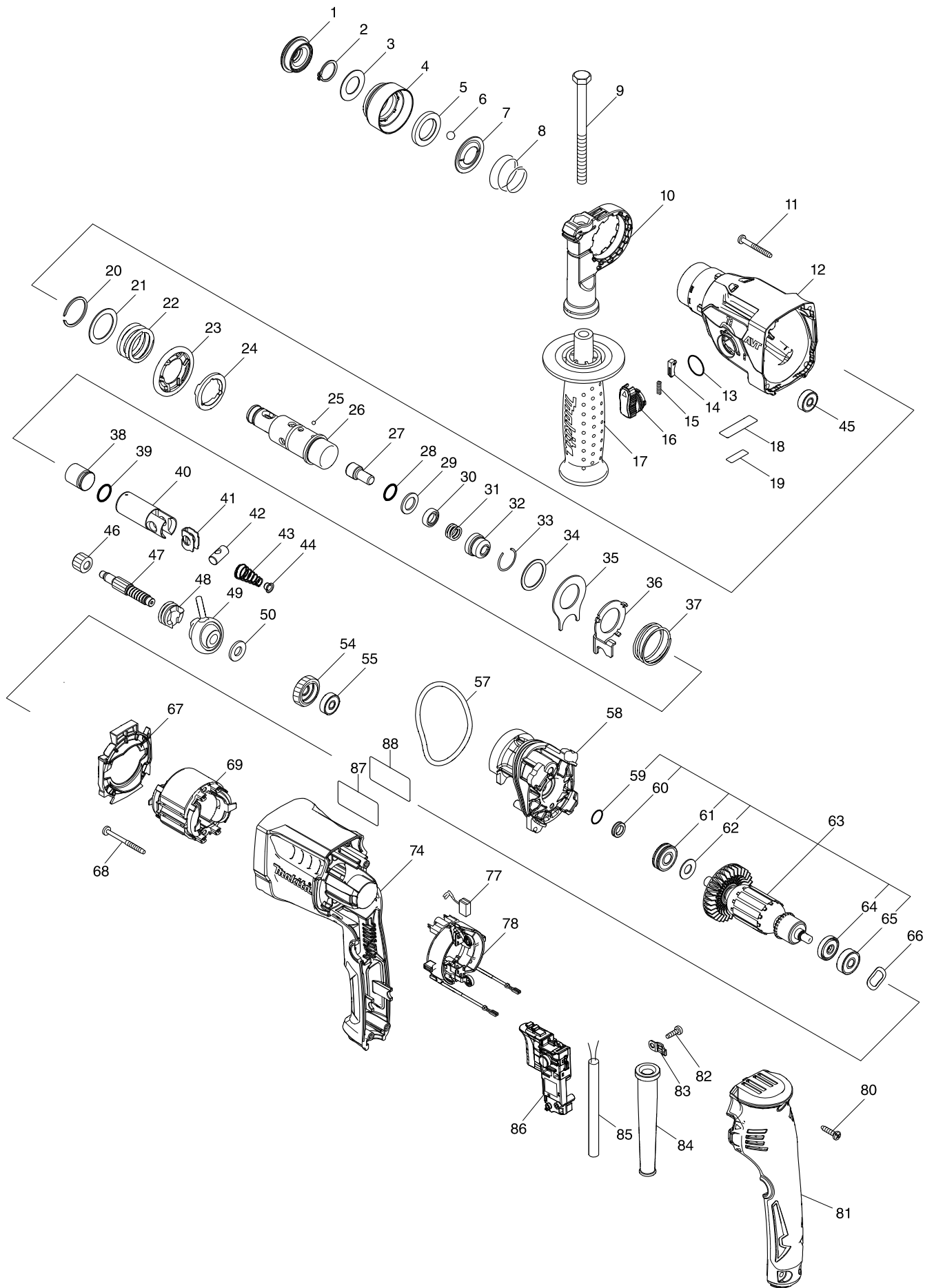


Modell-Nr. HR1840 BOHRHAMMER



Position	Artikel-Nr.	Beschreibung	I/C	Stk.	N/O	Opt. 1	Opt. 2	Hinweis
001	286037-3	CAP 34		1				
002	961057-5	Sicherungsring S-17		1				
003	253377-4	FLAT WASHER 17		1				
004	457214-6	CHUCK COVER		1				
005	257416-2	RING 21		1				
006	216022-2	Kugel 7,0		2				
007	346177-0	Fuehrungsscheibe		1				
008	232347-6	CONICAL COMP. SPRING 21-29		1				
009	921923-8	Schraube M8x120		1				
010	417911-6	Griffhalter		1				
011	266053-1	Blechschraube 4x35		4				
012	144272-8	GEAR HOUSING COMPLETE		1				
C10	213636-8	Dichtring 25		1				
C20	211375-4	Rillenkugellager 6805LLB		1				
013	213278-8	O-Ring 17		1				
014	161568-2	LOCK BUTTON COMPLETE		1				
015	232344-2	COMPRESSION SPRING 3		1				
016	161569-0	CHANGE LEVER COMPLETE		1				
017	158057-6	Seitengriff 36		1				
C10	931402-8	Mutter M8		1				
018	457356-6	PLATE		1				
019	853K43-5	HR1840 SERIAL NO. LABEL		1				
020	961135-1	Sprengring WR-25		1				
021	267304-5	Scheibe 25		1				
022	232360-4	COMPRESSION SPRING 25		1				
023	221494-8	SPUR GEAR 44		1				
024	327039-1	DRIVING FLANGE		1				
025	216019-1	Kugel 3		3				
026	326886-7	TOOL HOLDER		1				
027	326887-5	IMPACT BOLT		1				
028	213117-2	O-Ring 11		1				
029	253380-5	FLAT WASHER 13		1				
030	326888-3	RING 10		1				
031	232357-3	COMPRESSION SPRING 10A		1				
032	327038-3	CUP SLEEVE		1				
033	233942-5	Sprengring 22		1				
034	267175-0	Scheibe 24		1				
035	345681-6	Platte		1				
036	347128-6	CHANGE PLATE		1				
037	233458-0	Druckfeder 32		1				
038	326889-1	STRIKER		1				
039	213832-8	O-RING 13		1				
040	326890-6	PISTON CYLINDER		1				
041	347127-8	GUIDE PLATE		1				
042	324612-8	Stift		1				
043	232361-2	CONICAL COMP. SPRING 6-13		1				
044	347130-9	SPRING GUIDE		1				
045	211016-2	Rillenkugellager 626LLB		1				

