

Battery replacement

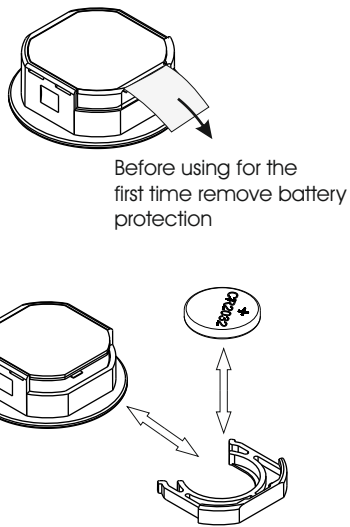
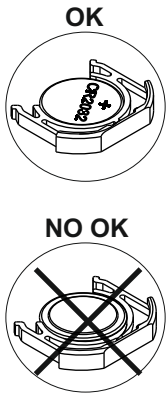


fig.1

Electrical connection

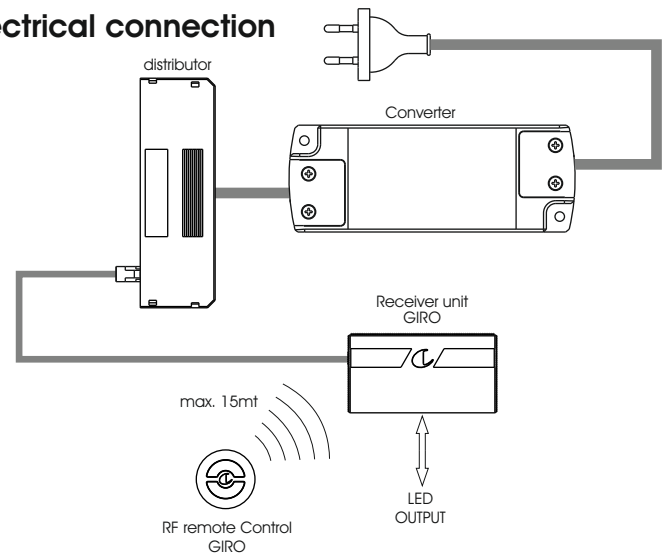
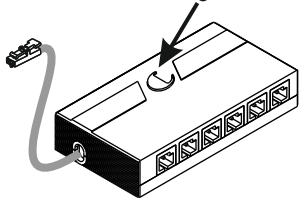


fig.2

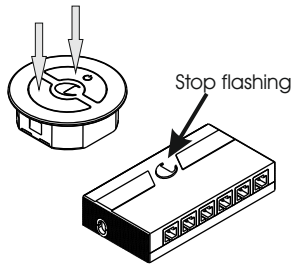
Matched transmitter mode A

1. Get powered

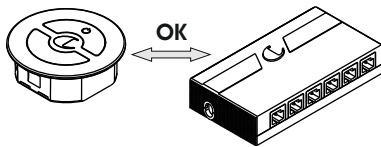
Indicator light flashes



2. Press two buttons at same time



3. Match successfully



4. Test

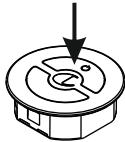


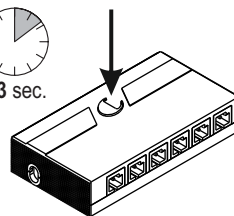
fig.3

Matched transmitter mode B

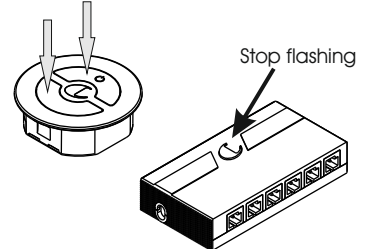
1. Long press, until it flashes



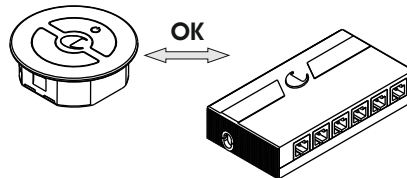
>3 sec.



2. Press two buttons at same time



3. Match successfully



4. Test

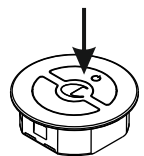
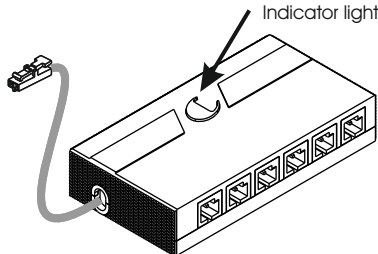


fig.4

Master mode set up

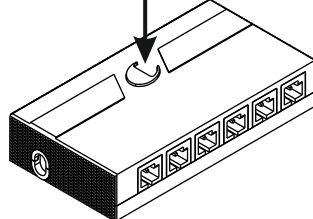
1. Get powered

Indicator light



1. Short press, indicator light turns ON

Short press

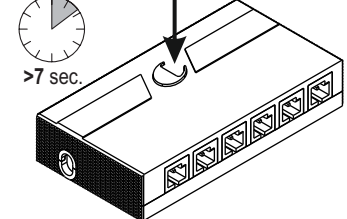


3. Long press, until indicator turn light OFF

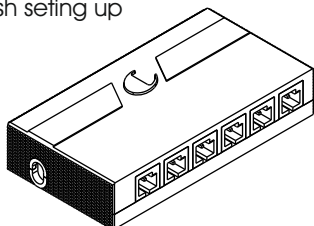


>7 sec.

Long press



4. Finish setting up



5. If other receiver is set as master, this current master will turn to follower automatically

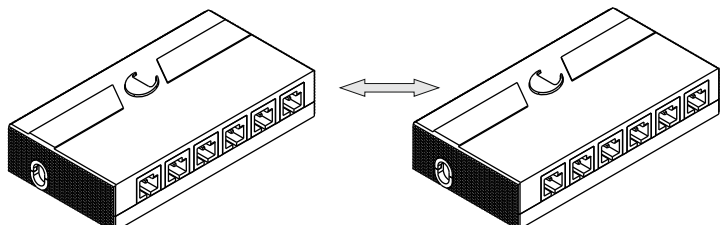
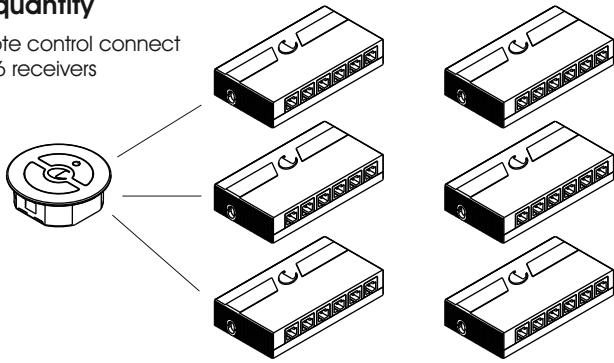


fig.5

Match quantity

One remote control connect with max.6 receivers



One receiver switch connect with max.4 remote control

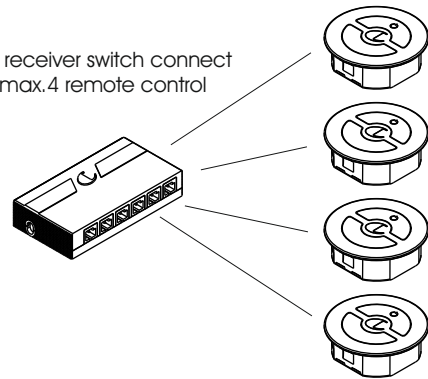
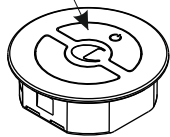
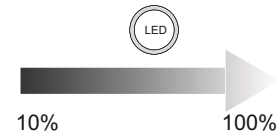
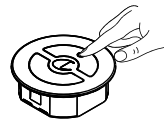


fig.6

Short press ON-OFF
Long press dimmer



Long press to increase
brightness.



Long press to decrease
brightness.

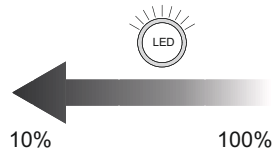
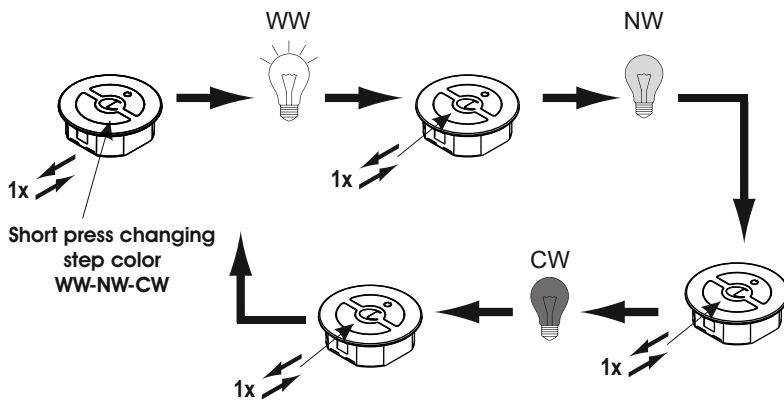


fig.7

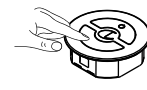
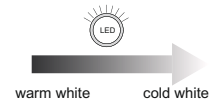


Short press changing
step color
WW-NW-CW

Long press changing
gradually color



long press to change color
warm white - cold white



long press to change color
cold white - warm white

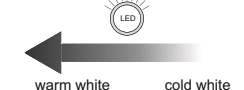


fig.8

fig.9

-UK- GIRO D-M - INSTALLATION INSTRUCTIONS

Luminaire in protection class III. The power must be supplied by a safety transformer.

In order to protect the environment, do not dispose of the appliance waste at the end of its useful life. Take it to the specific collection points for this type of waste in accordance with the norms.

The appliance is only suitable for indoor use only.

TECHNICAL DATA:

Power supply: 12Vdc - max. 36W
24Vdc - max. 72W
Remote control range 15 meters.
Battery type used: CR2032 (3V) lithium.

- WARNING: Make sure that the environmental conditions in which the equipment is installed are suitable. The installation may require the involvement of qualified personnel.

WARRANTY

The warranty on the device is valid only if powered by a power supply provided by DOMUS Line. The warranty general terms and conditions for this device are available at www.domusline.com

-D- GIRO D-M - MONTAGEANLEITUNG

Die Leuchte ist in der Schutzklasse III. Die Stromversorgung muss über einen Sicherheits-Transformator erfolgen

Schützt die Umwelt! Dieses elektrische Gerät bitte nicht in den Hausmüll entsorgen, wenn es nicht mehr benutzt wird, sondern zur Sammelstelle für Sondermüll nach geltender Gesetzgebung bringen.

Ausschließlich für Innenräume zugelassen.

TECHNISCHE DATEN:

Versorgung: 12Vdc - max. 36W
24Vdc - max. 72W
Aktionsradius der Fernbedienung 15 Meter
Verwendete Batterie: Lithium CR2032 (3V)

- HINWEIS: sicherstellen, dass sich die Raumbedingungen für die Installation des Gerätes eignen. Für die Installation kann qualifiziertes Fachpersonal angefordert werden.

GARANTIE:

Die Garantie auf diese Leuchten ist nur gültig, wenn diese mit einem Netzteil der Firma DOMUS Line verbunden werden. Die allgemeinen Garantiebedingungen dieser Leuchten stehen auf www.domusline.de zur Verfügung.

-F- GIRO D-M - INSTRUCTION DE MONTAGE

L'appareil est en classe de protection III. L'alimentation doit être fournie par un transformateur de sûreté.

Afin que défendre le milieu, vous ne jetez pas l'appareil entre les normales déchet à la fin de sa vie, mais le porter aux points de collecte spécifiques pour ces déchet prévus par le normatif.

L'appareil est apte seulement pour la jouissance à l'intérieur.

DONNÉES TECHNIQUES:

Alimentation: 12Vdc - max. 36W
24Vdc - max. 72W
Portée de la télécommande 15 mètres.
Type de pile utilisée: CR2032 (3V) au lithium.

- AVERTISSEMENT: vérifier que les conditions ambiantes du lieu d'installation de l'appareil soient appropriées. L'installation peut nécessiter l'intervention d'un personnel qualifié.

GARANTIE

La garantie de cet appareil est valable uniquement si ce dernier est alimenté par un transformateur fourni par DOMUS Line. Les conditions générales de garantie de cet appareil sont disponibles sur le site www.domusline.com

-E- GIRO D-M - INSTRUCCIONES DE MONTAJE

Aparato en clase de protección III. La alimentación tiene que ser suministrada de un transformador de seguridad.

Para proteger el medio ambiente, no tirar el aparato a la basura corriente al final de su vida útil, sino llevarlo a los puntos de recogida específicos previstos por la normativa vigente para estos residuos.

El aparato es apto sólo para el empleo a l'interior.

DATOS TÉCNICOS:

Alimentación: 12Vdc - max. 36W
24Vdc - max. 72W
Radio de acción mando a distancia 15 metros.
Tipo de batería utilizada: CR2032 (3V) litio.

- ADVERTENCIA: asegúrese de que las condiciones ambientales en las que se instala el aparato sean las idóneas. La instalación puede requerir la implicación de personal cualificado.

GARANTÍA

La garantía del aparato es válida solamente si se lo alimenta con un alimentador proporcionado por DOMUS Line. Las condiciones generales de garantía de este aparato están a disposición en www.domusline.com

-I- GIRO D-M - ISTRUZIONI DI MONTAGGIO

Apparecchio in classe di protezione III. L'alimentazione deve essere fornita da un trasformatore di sicurezza.

Onde tutelare l'ambiente, non buttare l'apparecchio tra i normali rifiuti al termine della sua vita utile, ma portatelo presso i punti di raccolta specifici per questi rifiuti previsti dalla normativa vigente.

L'apparecchio è adatto solo per l'utilizzo in ambiente interno.

DATI TECNICI:

Alimentazione: 12Vdc - max. 36W
24Vdc - max. 72W
Raggio di azione telecomando 15 metri.
Tipo batteria utilizzata: CR2032 (3V) litio.

- AVVERTENZA: assicurarsi che le condizioni ambientali in cui si installa l'apparecchio siano idonee. L'installazione può richiedere il coinvolgimento di personale qualificato.

GARANZIA

La garanzia sull'apparecchio è valida solo se alimentato con un alimentatore fornito da DOMUS Line. Le condizioni generali di garanzia di questo apparecchio sono disponibili sul sito www.domusline.com