



LIBRA H6 LIVING SETTINGS



WALL CABINET APPLICATION

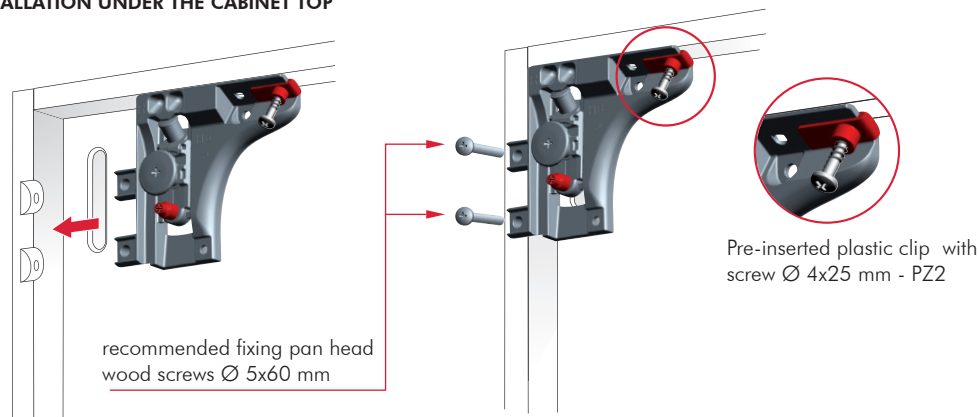
- Capacity loading 120 Kilos per piece (240 Kilos per pair).
- In accordance with the European Regulation DIN 68840.



LIBRA H6



INSTALLATION UNDER THE CABINET TOP



recommended fixing pan head wood screws Ø 5x60 mm

Pre-inserted plastic clip with screw Ø 4x25 mm - PZ2

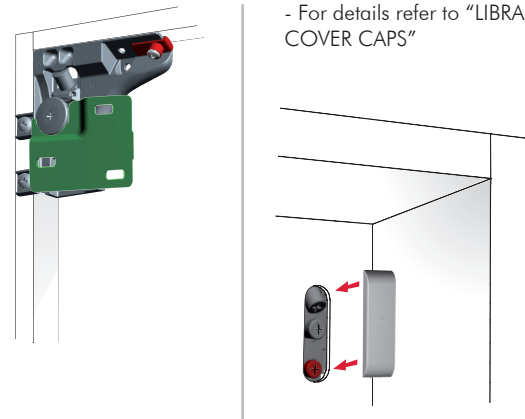
INSTALLATION ON THE WALL

- For details refer to "LIBRA WALL PLATES: LIBRA WP5 "



COVER CAP INSERTING

- For details refer to "LIBRA COVER CAPS"



It is the responsibility of the customer:
- to ensure that the wall is of a suitable quality to hold the unit fixing in place.
- to use the proper hardware fittings according to the construction of the wall.

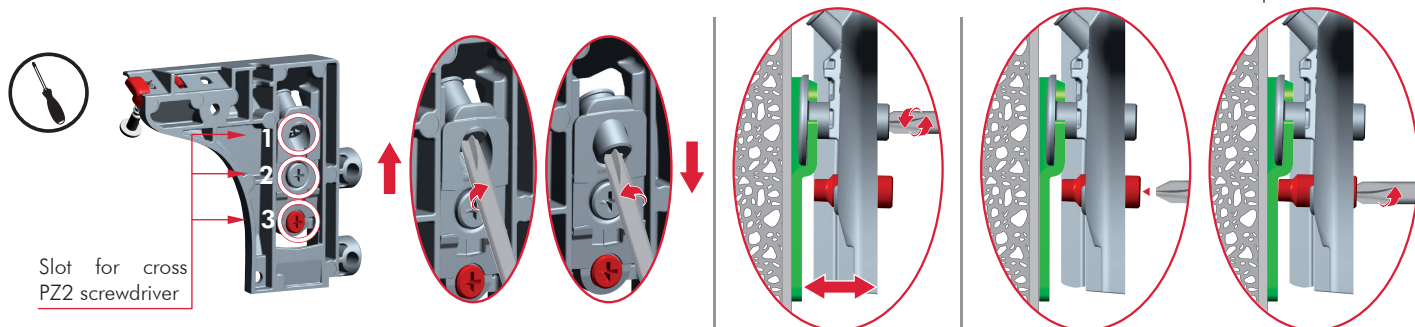
For more specific information, please refer to the WARNINGS section at the end of the catalogue.

ADJUSTMENTS

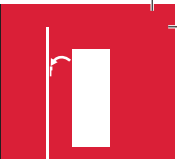
1
VERTICAL ADJUSTMENT
13 mm

2
IN-DEPTH ADJUSTMENT
12 mm

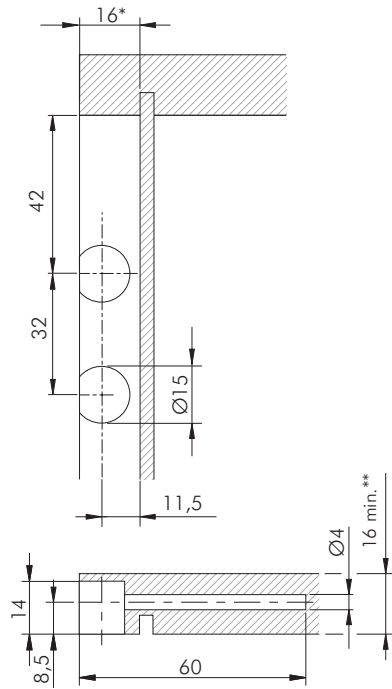
3
ANTI-TURNOVER LOCKING
Stop screwing the red bolt when it touches the wall plate



Slot for cross PZ2 screwdriver



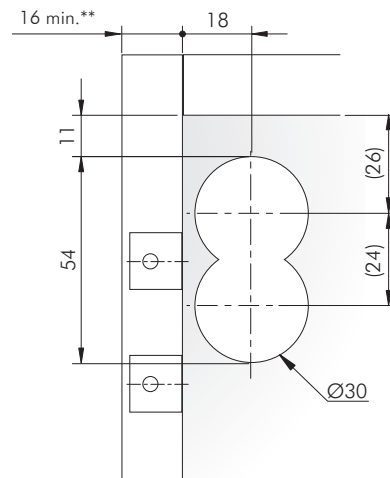
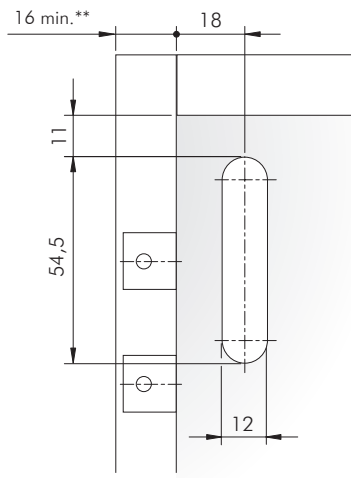
**DRILLING PLAN FOR LIBRA H6
SIDE PANEL AND SERVICE GAP**



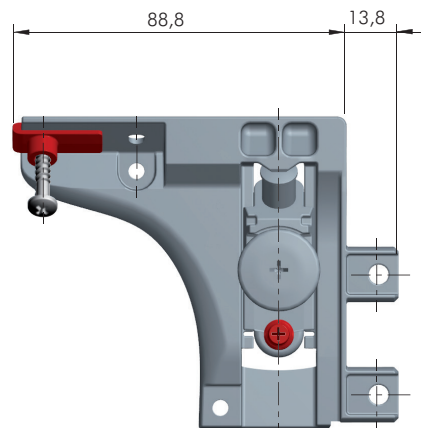
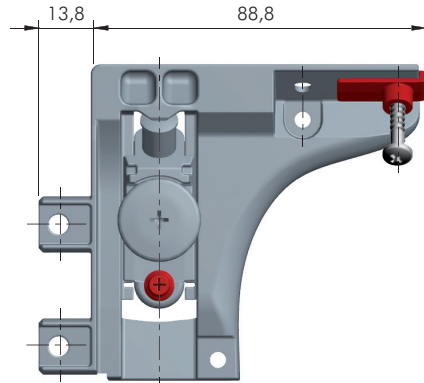
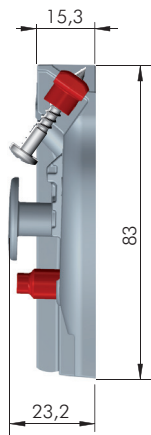
BACK PANEL

Libra CC1-CC4-CC5 cover cap

Libra CC2 cover cap



* Our technical department is at your disposal for different service gap options.
** For side panel 15 mm thick use "Libra H6 SPACER - 1 mm".

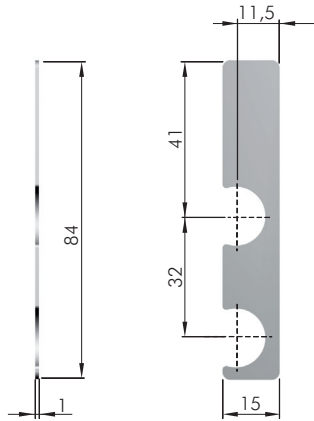
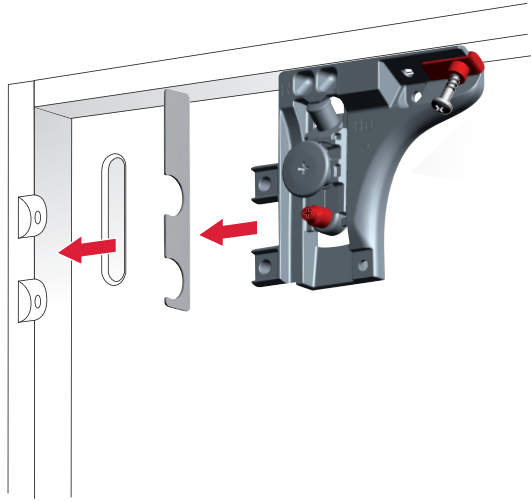


	= PZ2		= 50 pcs.
63420500ZN	R		
63420510ZN	L		

NOTE: for technical details about wall plates and cover caps please refer to the related sections "LIBRA WALL PLATES" on page 12.65 and "LIBRA COVER CAPS" on page 12.68.

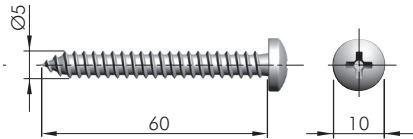


LIBRA H6 SPACER - 1 mm

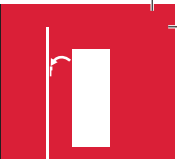


ST	= on request
123	
63490510XE	

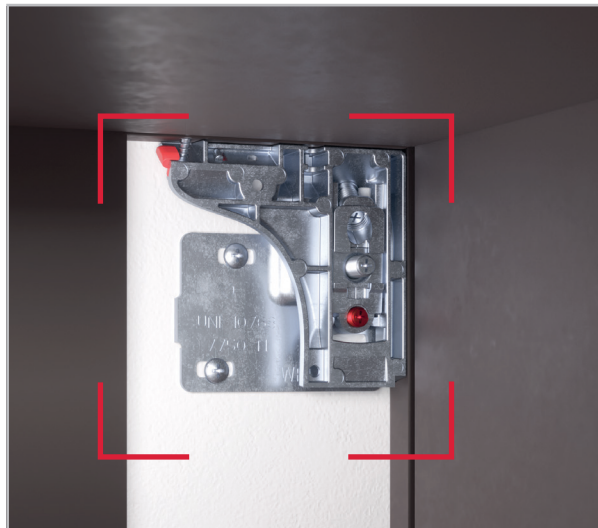
LIBRA H6 FIXING ACCESSORY



= Ø 4 mm	
= PZ2	
ST	= 500 pcs.
123	
60103560ZN	



LIBRA H6 and LIBRA CH LIVING SETTINGS



LIBRA H6



LIBRA CH

LIBRA H6 and LIBRA CH APPLICATIONS

BENEFITS OF LIBRA H6 AND LIBRA CH HANGING SYSTEMS:

- Vertical and in-depth adjustments, as well as the locking of the cabinet, can be easily and smoothly carried out from the inside.
- The hanging system is never interfering with the slides for drawers as it is placed behind the back panel.
- Absolutely no mills, drillings or grooves required inside the cabinet.

In the **current absence of a unifying European norm** which sets the standards for testing procedures aimed at defining capacity loadings of hanging systems conceived for suspended base units, we Italiana Ferramenta have simulated some of the most critical scenarios.

The following simulations are meant to give our customers valid reference points concerning cabinet dimensions, weights, recommended loading capacity even when loaded drawers are opened.

The reported data, empirically obtained, exclusively refer to the constructions and examples shown, correctly positioned and assembled by using WP5 wall plate.

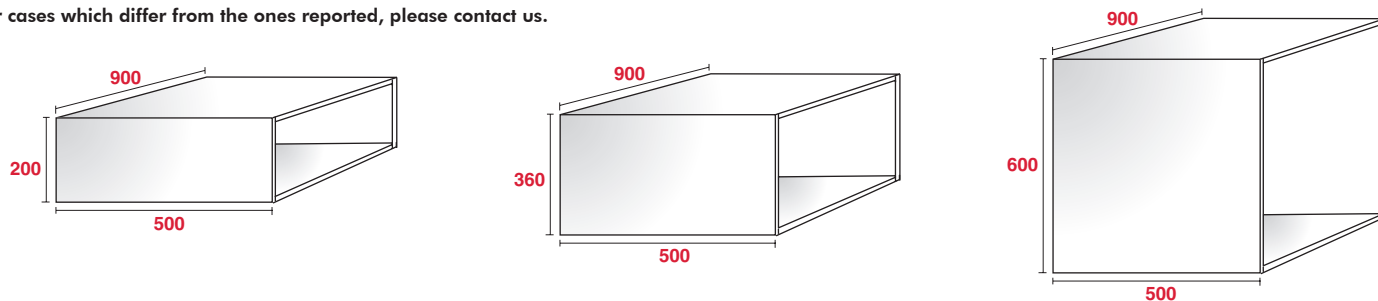
The customer must ensure that the wall is of suitable quality and structure.


Other important factors to be taken into consideration are determined by:


- the type of side panel, the actual thickness and the material used. It is recommended to use chipboard panels. For MDF panels please contact us for further information concerning the screw fixing.
- the type and dimensions of the screws used.
- the actual positioning, depth and width of the groove milled for the back side installation.
- the capacity loading of the drawer slides used as well as the actual construction of the drawer.


We always recommend to test a complete cabinet.

For cases which differ from the ones reported, please contact us.



FURNITURE TYPE	CAPACITY LOADING 	
	LIBRA H6	LIBRA H6 + 1 LIBRA CH
Cabinet	100 Kg	150 Kg
Cabinet + drawer	70 Kg + 30 Kg	120 Kg + 30 Kg

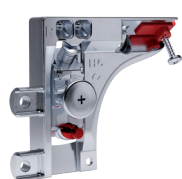
FURNITURE TYPE	CAPACITY LOADING 	
	LIBRA H6	LIBRA H6 + 1 LIBRA CH
Cabinet	180 Kg	230 Kg
Cabinet + drawer	150 Kg + 30 Kg	180 Kg + 50 Kg

FURNITURE TYPE	CAPACITY LOADING 	
	LIBRA H6	LIBRA H6 + 1 LIBRA CH
Cabinet	200 Kg	230 Kg
Cabinet + drawer	170 Kg + 30 Kg	170 Kg + 50 Kg

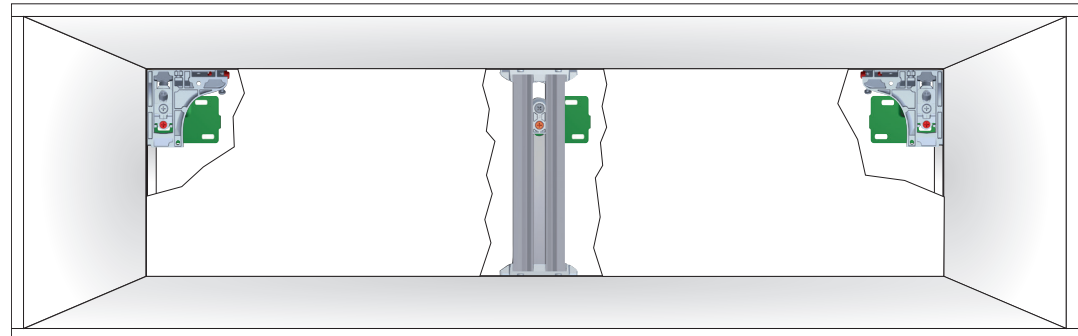
The reported data, empirically obtained, exclusively refer to the constructions and examples shown, correctly positioned and assembled by using WP5 wall plate.

LIBRA H6

LIBRA CH

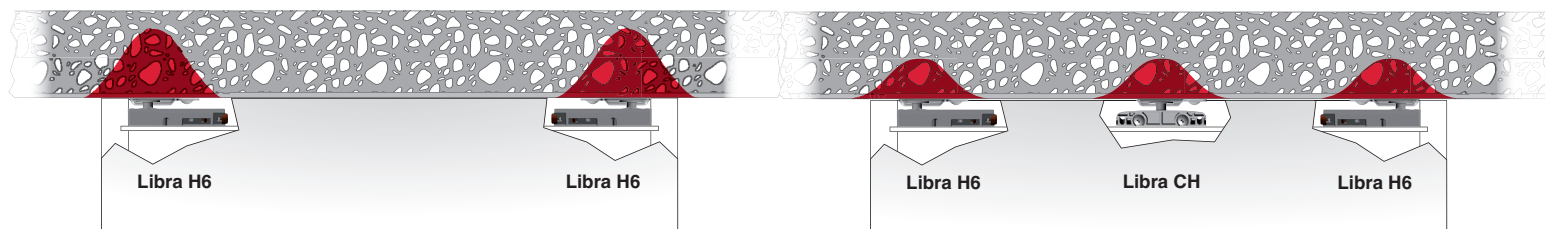


LIBRA WP5

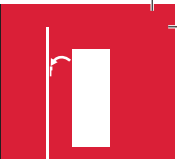


 = STRESS INTENSITY LEVEL ON THE WALL

12



By adding Libra CH to Libra H6, the capacity loading is more evenly distributed, thus sensibly reducing the stress intensity level on the wall.



DEMONSTRATION SCHEME : WHERE AND HOW TO USE LIBRA H6 AND LIBRA CH

