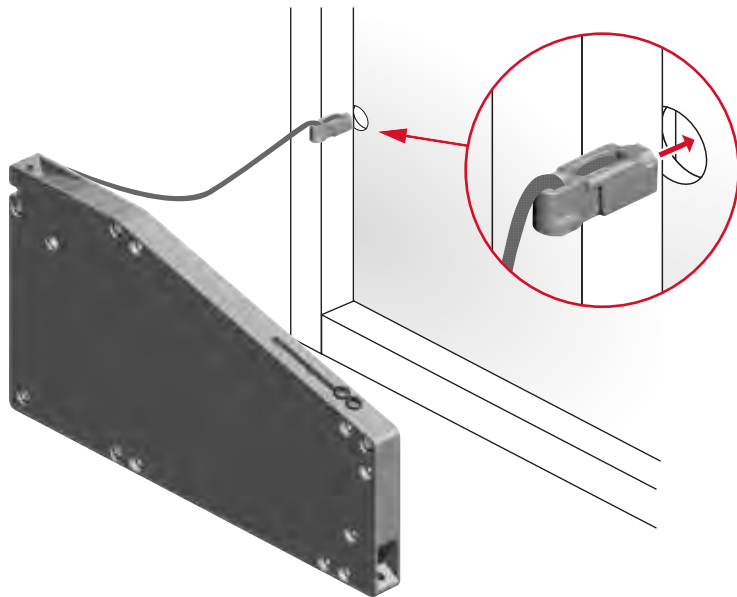
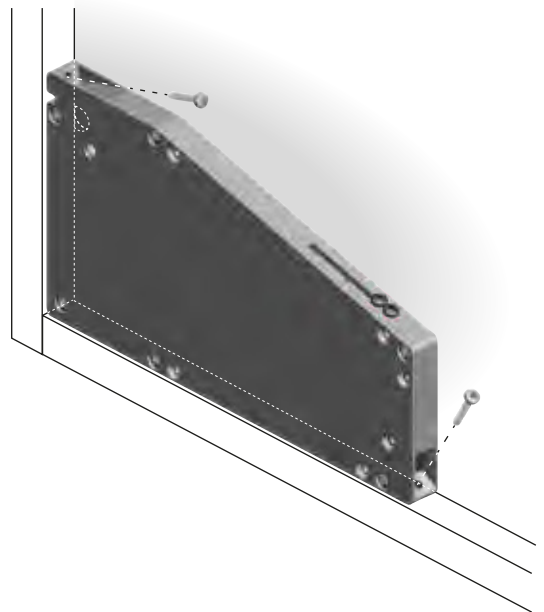


Montaža

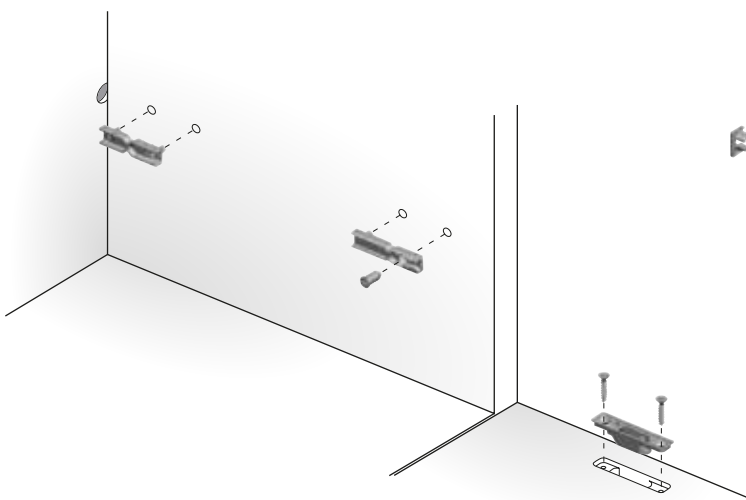
Korak 1 - provlačenje sajle kroz probušenu rupu na stražnjoj stranici



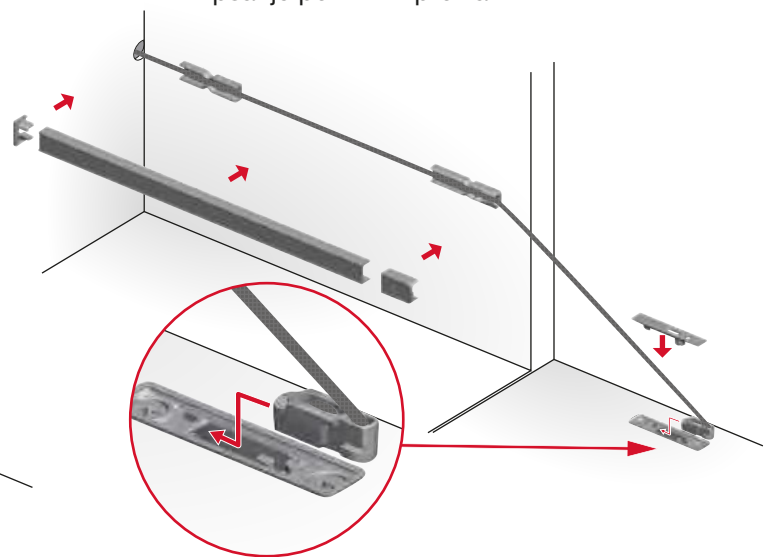
Korak 2 - montaža spremnika energije



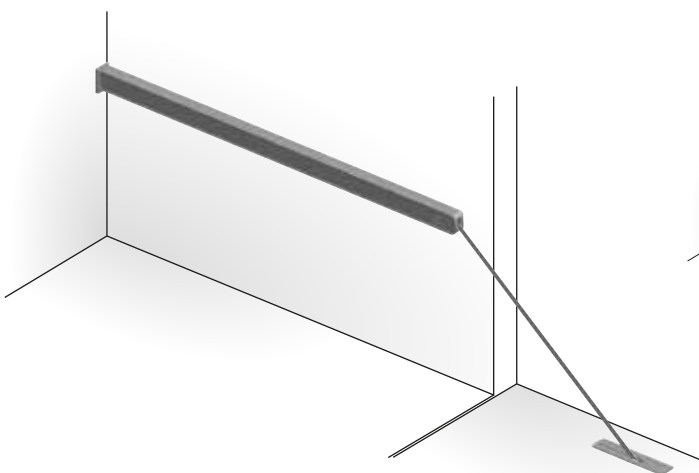
Korak 3 - montaža bočnog vođenja sajle



Korak 4 - montaža sajle u bočno vođenje / frontu i klipsanje pokrivnih profila



Korak 5 - završena montaža



Korak 6 - optimiranje kuta otvaranja

