

DE Vorderansicht
FR Vue de face
EN Front view
IT Vista frontale
ES Vista frontal

DE Abhängen der Profile
FR Raccourcir les profilés
EN Cutting the profiles to length
IT Taglio a misura dei profili
ES Cortar a medida los perfiles

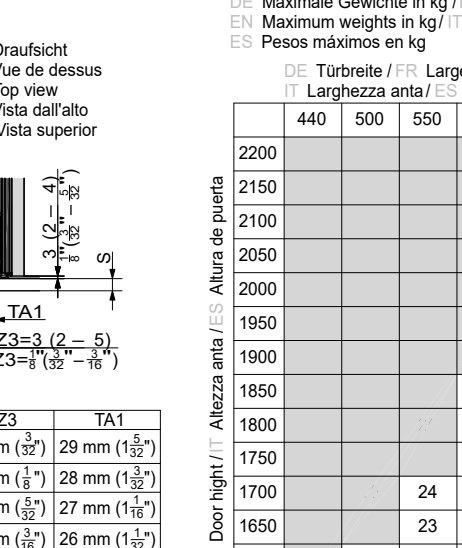
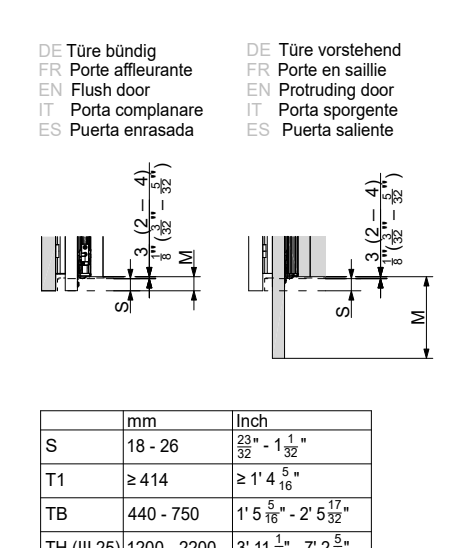
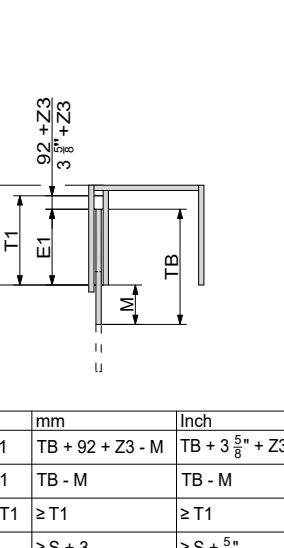
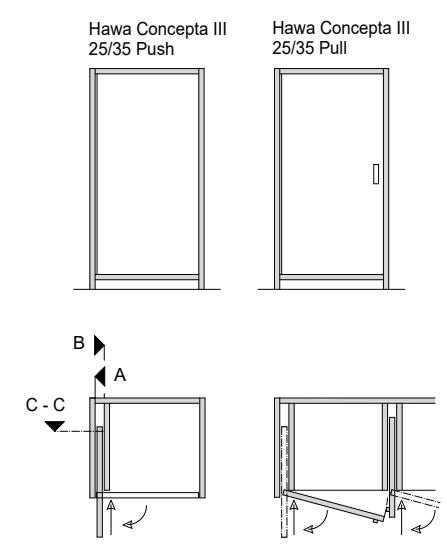
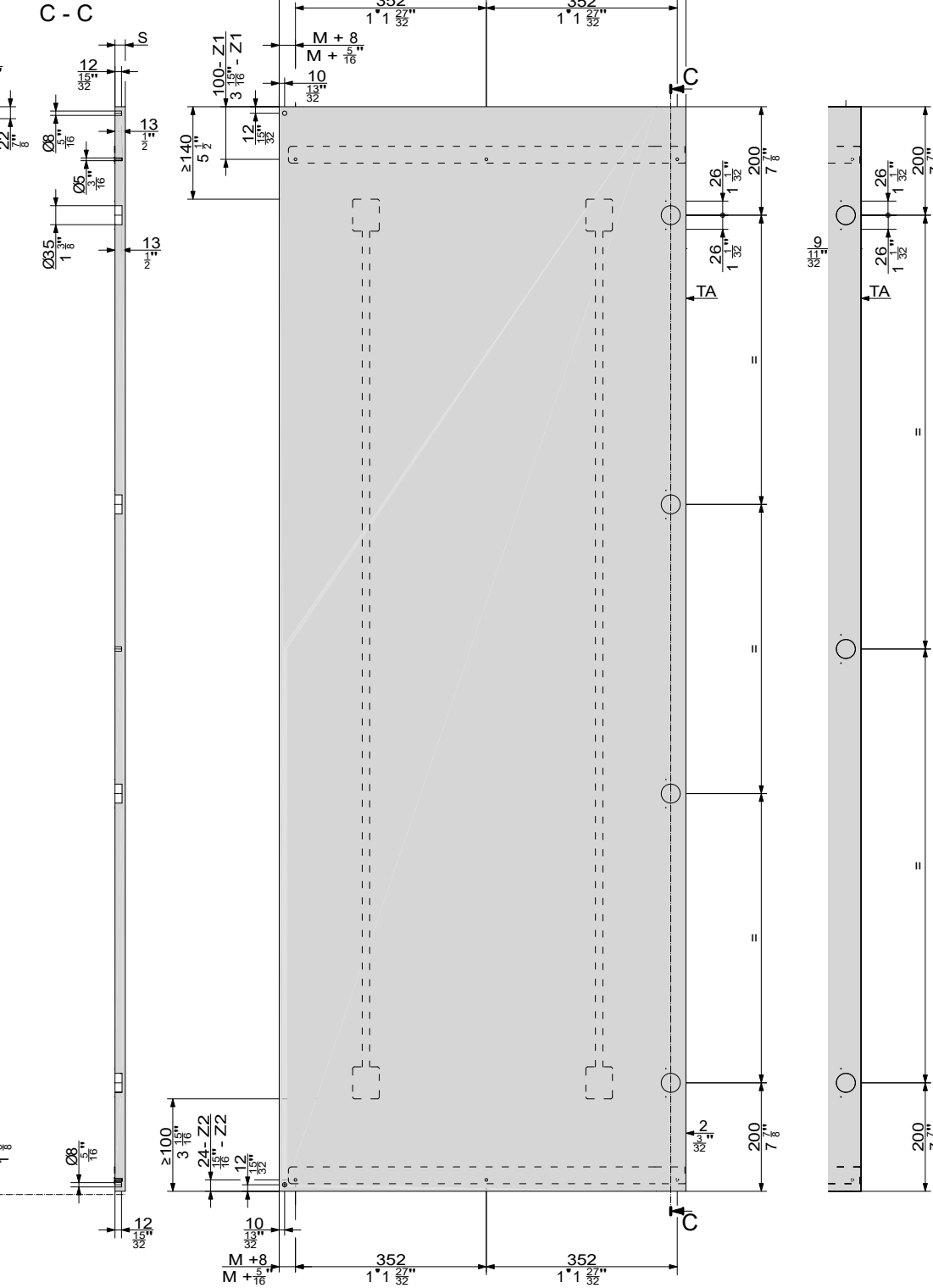
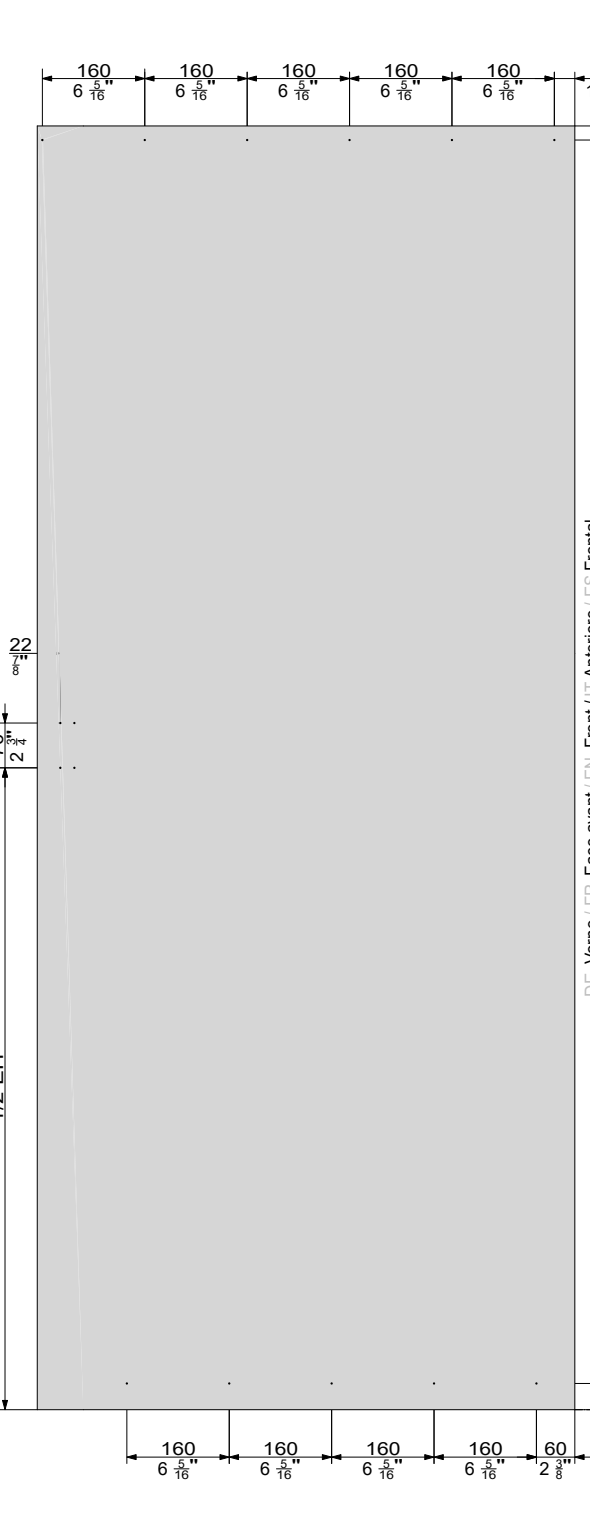
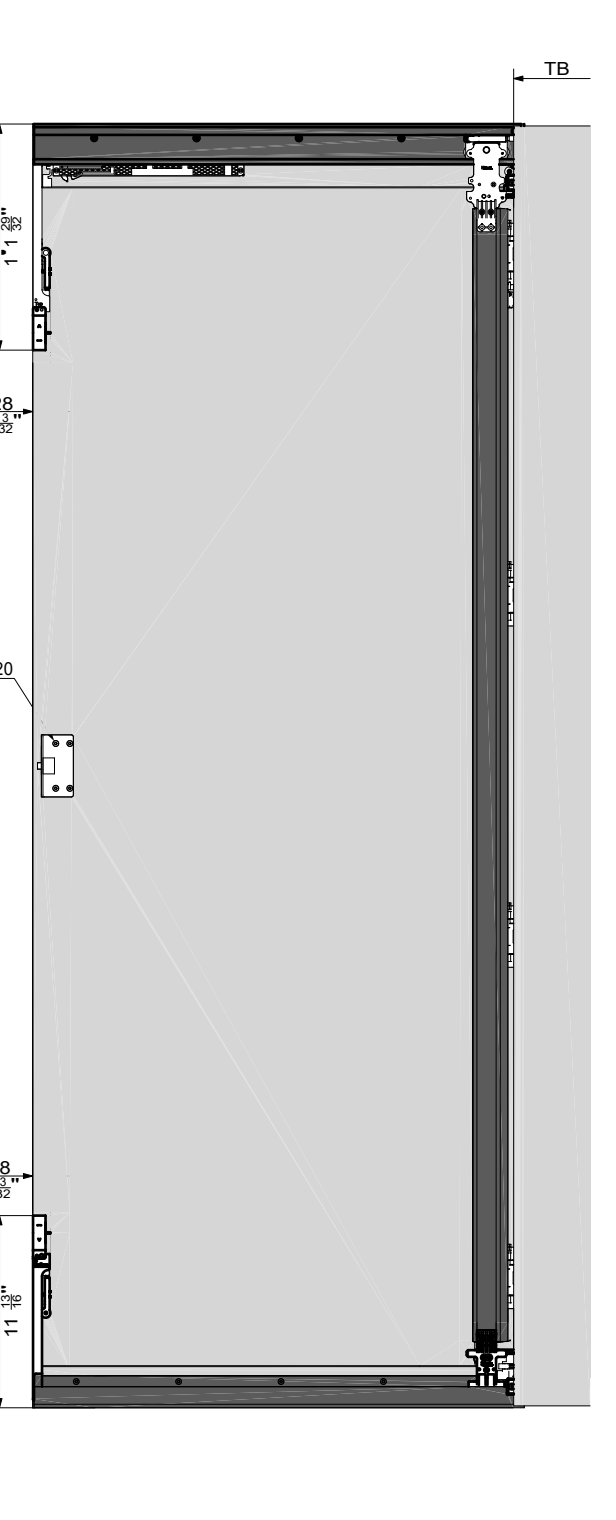
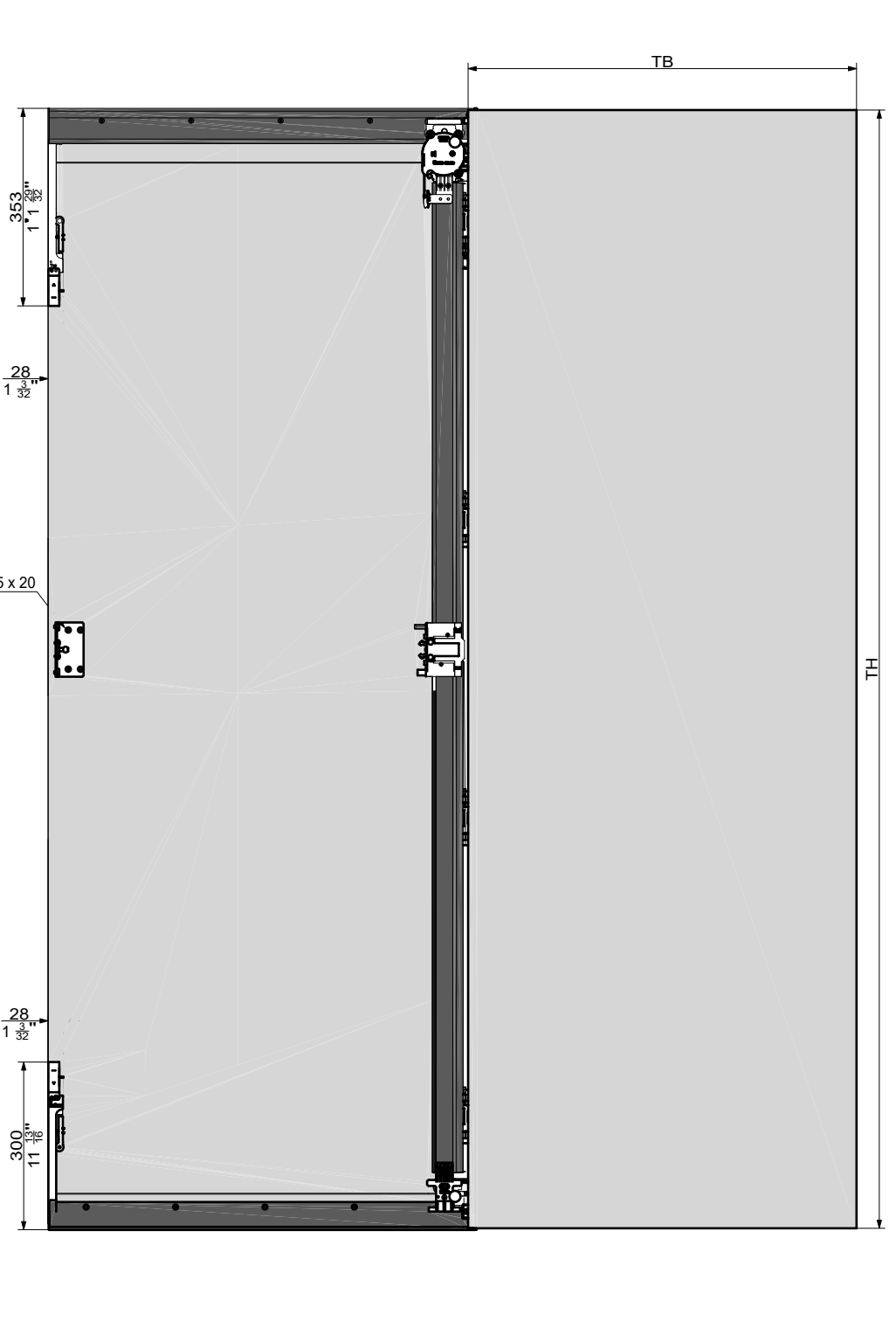
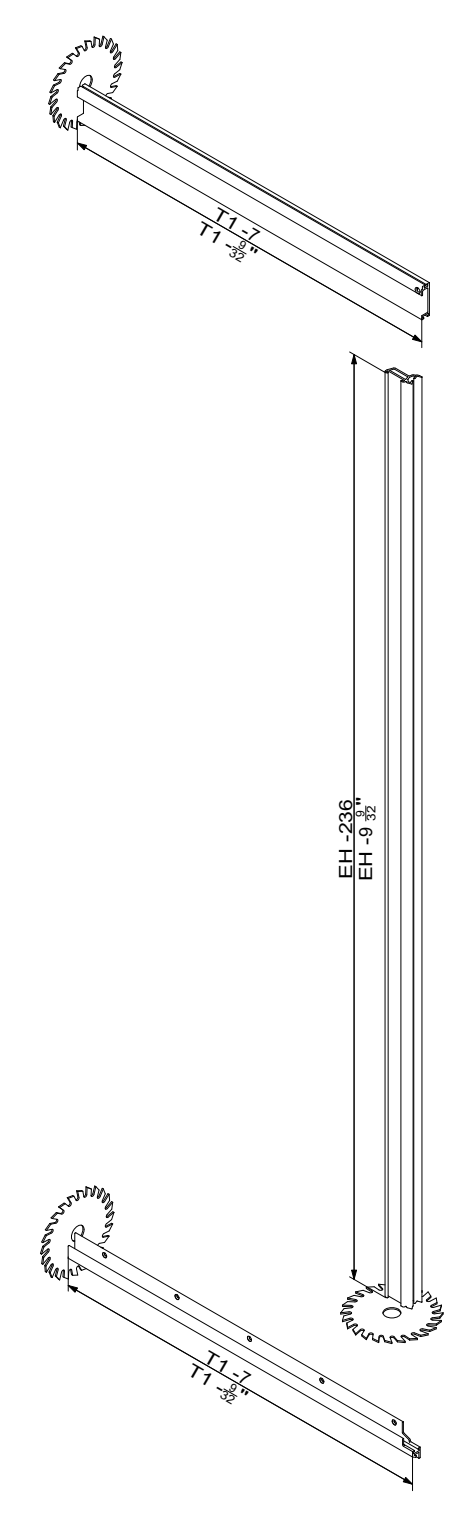
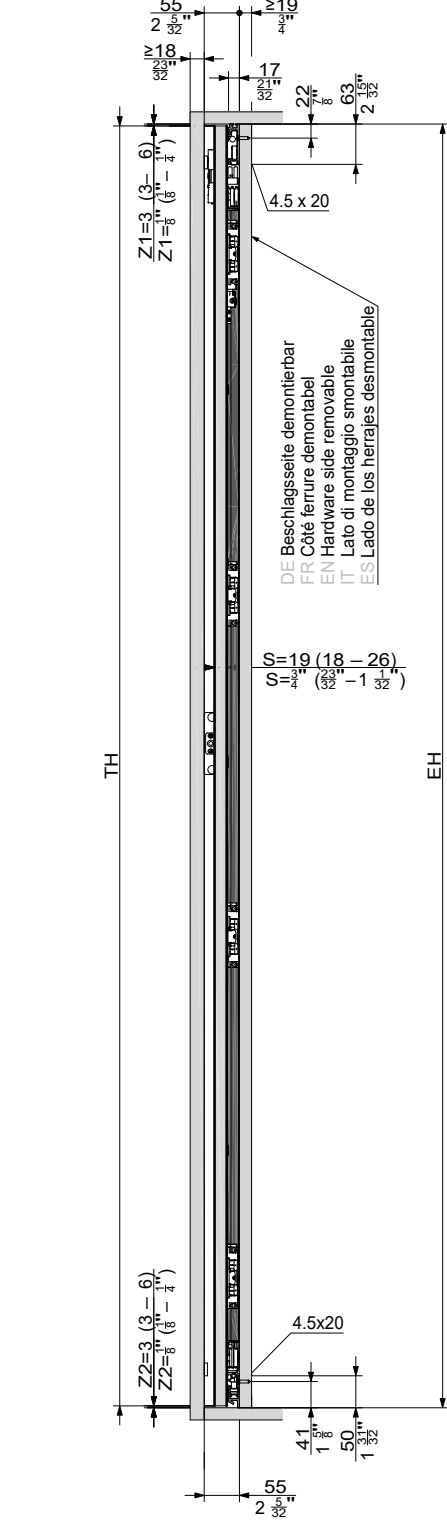
DE Seitenansicht
FR Vue de côté
EN Side view
IT Vista laterale
ES Vista lateral

DE Seitenansicht
FR Vue de côté
EN Side view
IT Vista laterale
ES Vista lateral

DE Beschlagsseite B
FR Côté de la ferrure B
EN Fitting side B
IT Lato ferramenta B
ES Lado del herraje B

DE Türe Concepta III 35
FR Porte Concepta III 35
EN Door Concepta III 35
IT Anta Concepta III 35
ES Puerta Concepta III 35

DE Türe Concepta III 25
FR Porte Concepta III 25
EN Door Concepta III 25
IT Anta Concepta III 25
ES Puerta Concepta III 25



| | mm | Inch |
|-----|------------------|----------------------|
| T1 | TB + 92 + Z3 - M | TB + 3 5/8" + Z3 - M |
| E1 | TB - M | TB - M |
| KT1 | ≥ T1 | ≥ T1 |
| M | ≥ S + 3 | ≥ S + 5/16" |
| | ≤ TB - 320 | ≤ TB - 1 13/16" |

| | mm | Inch |
|-------------|-------------|----------------------------|
| S | 18 - 26 | 3/8" - 1 1/8" |
| T1 | ≥ 414 | ≥ 1' 4 5/16" |
| TB | 440 - 750 | 1' 5 1/8" - 2' 5 17/32" |
| TH (III 25) | 1200 - 2200 | 3' 11 1/4" - 7' 2 5/8" |
| TH (III 35) | 1900 - 2700 | 6' 2 13/16" - 8' 10 15/16" |
| Z1 | 3 - 6 | 1/8" - 1/4" |
| Z2 | 3 - 6 | 1/8" - 1/4" |
| Z3 | 2 - 5 | 3/32" - 3/16" |

| Z3 | TA1 |
|--------------|----------------|
| 2 mm (3/32") | 29 mm (1 1/8") |
| 3 mm (1/8") | 28 mm (1 1/8") |
| 4 mm (5/16") | 27 mm (1 1/8") |
| 5 mm (3/16") | 26 mm (1 1/8") |

Hawa Concepta III 25

DE Maximale Gewichte in kg / FR Poids maximale en kg / EN Maximum weights in kg / IT Pesì massimo in kg / ES Pesos máximos en kg

DE Türbreite / FR Largeur de porte / EN Door width / IT Larghezza anta / ES Ancho de puerta

| | 440 | 500 | 550 | 600 | 650 | 700 | 750 |
|------|-----|-----|-----|-----|-----|-----|-----|
| 2200 | | | | | | | 24 |
| 2150 | | | | | | | 23 |
| 2100 | | | | | | | 24 |
| 2050 | | | | | | | 24 |
| 2000 | | | | | | | 23 |
| 1950 | | | | | | | 24 |
| 1900 | | | | | | | 23 |
| 1850 | | | | | | | 24 |
| 1800 | | | | | | | 23 |
| 1750 | | | | | | | 22 |
| 1700 | | | | | | | 22 |
| 1650 | | | | | | | 23 |
| 1600 | | | | | | | 24 |
| 1550 | | | | | | | 23 |
| 1500 | | | | | | | 24 |
| 1450 | | | | | | | 23 |
| 1400 | | | | | | | 22 |
| 1350 | | | | | | | 21 |
| 1300 | | | | | | | 20 |
| 1250 | | | | | | | 19 |
| 1200 | | | | | | | 18 |

Hawa Concepta III 25

DE Maximale Gewichte in lbs. / FR Poids maximale en lbs. / EN Maximum weights in lbs. / IT Pesì massimo in lbs. / ES Pesos máximos en lbs.

DE Türbreite / FR Largeur de porte / EN Door width / IT Larghezza anta / ES Ancho de puerta

| | 1' 5 5/16" | 1' 7 11/16" | 1' 9 21/32" | 1' 11 5/8" | 2' 1 19/32" | 2' 3 9/16" | 2' 5 17/32" |
|--------------|------------|-------------|-------------|------------|-------------|------------|-------------|
| 7' 2 5/8" | | | | | | | 53 |
| 7' 0 21/32" | | | | | | | 51 |
| 6' 10 11/16" | | | | | | | 53 |
| 6' 8 23/32" | | | | | | | 53 |
| 6' 6 3/4" | | | | | | | 51 |
| 6' 4 23/32" | | | | | | | 53 |
| 6' 2 13/32" | | | | | | | 51 |
| 6' 0 27/32" | | | | | | | 53 |
| 5' 10 1/2" | | | | | | | 51 |
| 5' 8 29/32" | | | | | | | 49 |
| 5' 6 15/16" | | | | | | | 53 |
| 5' 4 31/32" | | | | | | | 51 |
| 5' 3" | | | | | | | 53 |
| 5' 1 1/8" | | | | | | | 51 |
| 4' 11 1/8" | | | | | | | 53 |
| 4' 9 3/32" | | | | | | | 51 |
| 4' 7 1/4" | | | | | | | 49 |
| 4' 5 5/32" | | | | | | | 46 |
| 4' 3 35/32" | | | | | | | 44 |
| 4' 1 7/32" | | | | | | | 42 |
| 3' 11 1/2" | | | | | | | 40 |

Hawa Concepta III 35

DE Maximale Gewichte in kg / FR Poids maximale en kg / EN Maximum weights in kg / IT Pesì massimo in kg / ES Pesos máximos en kg

DE Türbreite / FR Largeur de porte / EN Door width / IT Larghezza anta / ES Ancho de puerta

| | 440 | 500 | 550 | 600 | 650 | 700 | 750 |
|------|-----|-----|-----|-----|-----|-----|-----|
| 2700 | | | | | | | |
| 2650 | | | | | | | |
| 2600 | | | | | | | |
| 2550 | | | | | | | |
| 2500 | | | | | | | |
| 2450 | | | | | | | 34 |
| 2400 | | | | | | | 33 |
| 2350 | | | | | | | 34 |
| 2300 | | | | | | | 34 |
| 2250 | | | | | | | 33 |
| 2200 | | | | | | | 34 |
| 2150 | | | | | | | 33 |
| 2100 | | | | | | | 32 |
| 2050 | | | | | | | 34 |
| 2000 | | | | | | | 33 |
| 1950 | | | | | | | 32 |
| 1900 | | | | | | | 34 |

Hawa Concepta III 35

DE Maximale Gewichte in lbs. / FR Poids maximale en lbs. / EN Maximum weights in lbs. / IT Pesì massimo in lbs. / ES Pesos máximos en lbs.

DE Türbreite / FR Largeur de porte / EN Door width / IT Larghezza anta / ES Ancho de puerta

| | 1' 5 5/16" | 1' 7 11/16" | 1' 9 21/32" | 1' 11 5/8" | 2' 1 19/32" | 2' 3 9/16" | 2' 5 17/32" |
|--------------|------------|-------------|-------------|------------|-------------|------------|-------------|
| 8' 10 5/16" | | | | | | | |
| 8' 8 11/32" | | | | | | | |
| 8' 6 3/8" | | | | | | | |
| 8' 4 13/32" | | | | | | | |
| 8' 2 7/16" | | | | | | | |
| 8' 0 45/64" | | | | | | | 75 |
| 7' 10 1/4" | | | | | | | 73 |
| 7' 8 83/128" | | | | | | | 75 |
| 7' 6 49/64" | | | | | | | 75 |
| 7' 4 19/32" | | | | | | | 73 |
| 7' 2 3/8" | | | | | | | 75 |
| 7' 0 21/32" | | | | | | | 73 |
| 6' 10 11/16" | | | | | | | 71 |
| 6' 8 23/32" | | | | | | | 75 |
| 6' 6 3/4" | | | | | | | 73 |
| 6' 4 23/32" | | | | | | | 71 |
| 6' 2 13/32" | | | | | | | 75 |

DE Abkürzungen / FR Abréviations / EN Abbreviations / IT Abbreviazioni / ES Abreviaturas

| | DE | FR | EN | IT | ES |
|-----|--------------------------|--|---|------------------------------------|--|
| E1 | Einschubtiefe | Profondeur d'escamotage | Slide-in depth | Profondità di inserimento | Profundidad de introducción |
| EH | Einbauhöhe | Hauteur d'encastrément | Installation height | Altezza d'incasso | Altura de montaje |
| KT1 | Körpustiefe | Profondeur de corps | Cabinet depth | Profondità mobile | Profundidad del mueble |
| M | Türüberstand über Korpus | Distance de la poignée de la porte | Door handle spacing | Sporgenza dell'anta sopra la cassa | Voladizo de la puerta por encima de la carcasa |
| S | Türdicke | Epaisseur de porte | Door thickness | Spessore anta | Grosor de la puerta |
| T1 | Beschlagtiefe | Profondeur de ferrure | Hardware depth | Profondità ferramenta | Profundidad del herraje |
| TA | Topfachsabstand | Ecartement d'axe de la charnière invisible | Axis-centre distance of concealed hinge | Distanza scatola/asse | Distancia de la cazoleta |
| TB | Türbreite | Largeur de porte | Door width | Larghezza anta | Ancho de puerta |
| TH | Türhöhe | Hauteur de porte | Door height | Altezza anta | Altura de puerta |
| Z | Luftzwischenraum | Jeu dans l'espacement | Air gap | Trufero d'aria | Espacio libre |

DE Türgewicht in kg / FR Poids de porte en kg / EN Door weight in kg / IT Peso anta in kg / ES Peso de puerta en kg

DE Türgewicht in lbs. / FR Poids de porte en lbs. / EN Door weight in lbs. / IT Peso anta in lbs. / ES Peso de puerta en lbs.

DE Türgewicht in kg / FR Poids de porte en kg / EN Door weight in kg / IT Peso anta in kg / ES Peso de puerta en kg

DE Türgewicht in lbs. / FR Poids de porte en lbs. / EN Door weight in lbs. / IT Peso anta in lbs. / ES Peso de puerta en lbs.

DE Anlagelinks, Türe einliegend
FR Installation à gauche, Porte encastrée
EN Left-hand system, inlaid door
IT Installazione a sinistra, Anta all'interno
ES Instalación en el lado izquierdo, Puerta enrasada

