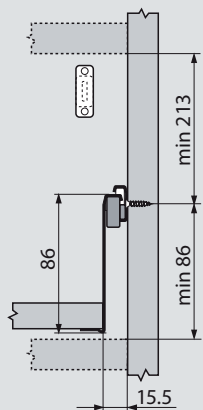


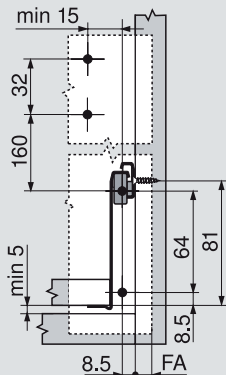
Progettazione

Ingombro nel corpo mobile

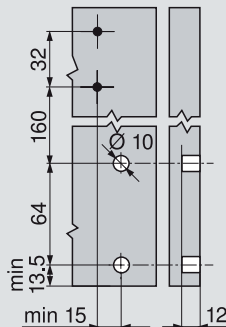


Quote di montaggio per frontale da avvitare

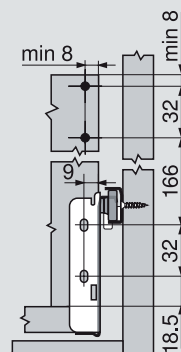
FA Battuta frontale



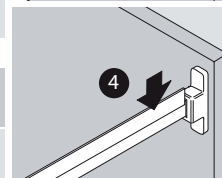
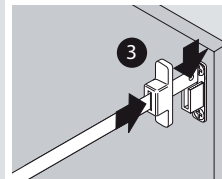
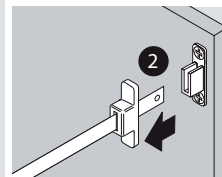
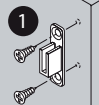
Quote foratura del frontale per mont. EXPANDO e a pressione



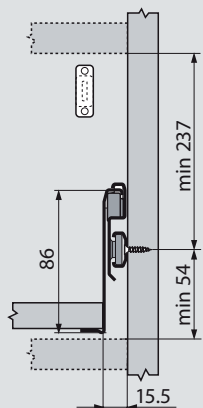
Quote di montaggio dello schienale



Montaggio

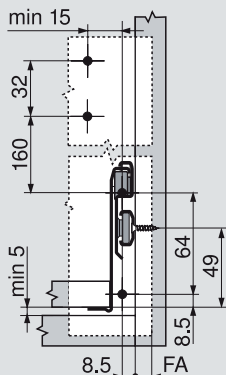


Ingombro nel corpo mobile

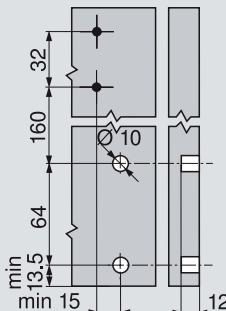


Quote di montaggio per frontale da avvitare

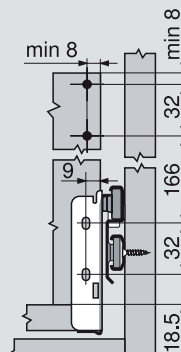
FA Battuta frontale



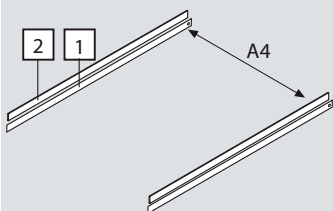
Quote foratura del frontale per mont. EXPANDO e a pressione



Quote di montaggio dello schienale



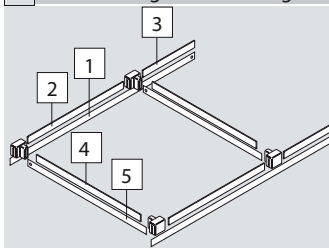
Misure del taglio DIN-A4 trasversale



Prof. minima utile = 376 mm

- [1] Lunghezza nom. - 28 mm
- [2] Lunghezza nom. - 53 mm

Misure del taglio DIN-A4 longitudinale



Lunghezza nom. min. = 500 mm

- [1] Lunghezza nom. - 28 mm
- [2] 305 mm
- [3] Lunghezza nom. - 406 mm
- [4] Largh. interna corpo - 82 mm
- [5] Largh. interna corpo - 59 mm